

EN

LITOSIL



LITOKOL®



# > contents

<b>The Litosil family</b>	<b>5</b>
<b>Litosil COLOR</b>	<b>6</b>
<b>Litosil NEUTRO</b>	<b>10</b>
<b>Litosil MS</b>	<b>14</b>
<b>Colour range</b>	<b>18</b>
<b>Consumption</b>	<b>19</b>



# Litosil is the family of sealants designed by Litokol for a flawless tiling finish

**Neutral or Acetic silicone, MS hybrid sealants and adhesives:** the Litosil range includes all necessary products for filling, sealing and waterproofing any type of surface.

The silicones are inorganic polymers made of mixed carbon and silicone structures, while the MS range (Modified Sealants or Modified Silanes) are single-component polymers containing ether groups and silane-based molecules suited to a variety of applications. Discover the ideal silicone and sealant for every job.

It is **smooth** in appearance, tough and **durable**. **Adhesion is perfect** without any primer on all industrial and building materials.

Litosil is also widely used in the **generic building industry** for a range of purposes. Its fields of application are virtually limitless. Given its anti-ageing, impermeable, UV-resistant and weatherproof properties, **it is suitable for both indoor and outdoor use**.

The Litosil family of sealants includes three different types of products characterised by three different formulation technologies: **hybrid, neutral and acetic**.

The Litosil family:



# LITOSIL COLOR

## Sigillante acetico universale



Highly elastic for resistant and long-lasting sealing.  
Ideal for ceramics, interiors and exteriors, wet areas and swimming pools.  
Solvent-free and mould-resistant.

300 ml cartridge | 12 pc box

Litosil COLOR is a single-component sealant formulated with pure acetic cross-linked silicone.

Acetic silicones are used to seal tiles, enamelled ceramic, glass and bathroom and kitchen accessories for perfect sealing between different materials.

Litosil COLOR is universal, easy to use, odourless, elastic and resistant to UV rays.

Available in 40 colours

# Applications

- interiors and exteriors
- terraces and balconies
- swimming pools
- wellness centres
- wet areas
- tanks and fountains
- underfloor heating
- external walls

For more information, download the technical data sheet from the website [www.litokol.it](http://www.litokol.it)





# ➤ Benefits



Product with very low volatile organic compound (VOC) emission rate. Satisfies the requirements of class EC1PLUS according to the EMICODE protocol and class A+ (Émission dans l'air intérieur - French regulation)



Ready to use



Flexible



Waterproof



Excellent resistance to weathering, ageing and UV rays



Resistant to mould and bacteria



Exceptionally smoothable surface



Excellent adhesion without primer on all typical industrial and building materials



Product not subject to restrictions for road, sea, air and rail transport



Wide colour range.

Perfectly compatible with the entire range of Litokol grouts.



# LITOSIL NEUTRO

## Sigillante neutro universale



Pure neutral silicone sealant for delicate surfaces, natural stone and façades. Safely seal stone, marble, ceramic and porcelain tiles, without the risk of staining. Mould-resistant.

300 ml cartridge | 12 pc box

Litosil NEUTRO is a single-component sealant formulated with neutral oxime cross-linked silicone.

Thanks to its neutral chemical nature, it does not stain: ideal for sealing **marble and natural stone joints**; perfect for sealing **delicate metal elements** subject to rust.

Neutral silicones are ideal for sealing marble and natural stone but also a range of other surfaces such as wood, metal, PVC, glass and aluminium in doors and windows.

Available in 6 colours + transparent

# Applications

- natural stone
- marble and granite
- external walls
- terraces and balconies
- wet areas
- tanks and fountains
- swimming pools
- wellness centres

For more information, download the technical data sheet from the website [www.litokol.it](http://www.litokol.it)





# ➤ Plus



Product with ultra-low volatile organic compound (VOC) emission rate. Satisfies the requirements of class EC1PLUS according to the EMICODE protocol and class A+ (Émission dans l'air intérieur - French regulation)



Wide neutral colour range. Perfectly compatible with the entire range of Litokol grouts.

- White 2
- Black 1
- Crystal
- Silver 1
- Ivory 4
- Silver 3
- Beige 3



Does not stain, marble and natural stone



Flexible



Waterproof



Excellent resistance to weathering, ageing and UV rays



Resistant to mould and bacteria



Ideal for use on façades



Exceptionally smoothable surface



Excellent adhesion without primer on all typical industrial and building materials



Odourless



Non-corrosive



Product not subject to restrictions for road, sea, air and rail transport



# LITOSIL MS

## fissauiscesigilla

Multipurpose, elastic and impermeable adhesive sealant.

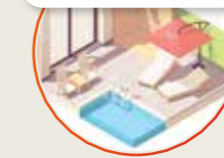
Litosil MS is a **versatile and high-performance** thixotropic elastic adhesive sealant for elastic bonding and sealing in industrial assemblies or the building sector in general, where flexible joints or **powerful elastic adhesives** are required for all types of materials. Thixotropic appearance, easy to apply, even vertically.



290 ml cartridges | 12 pc boxes

## > Applications

interiors and exteriors



creation of drip catchers



natural stone



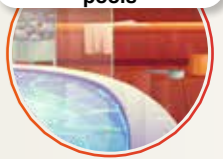
wet areas



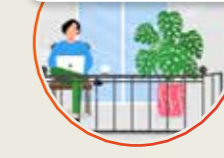
steps and edges in general



spas and swimming pools



terraces and balconies



tanks, fountains



mirror fixing



### Compatible with countless materials:

- plaster, levelling layers, screeds;
- reinforced concrete, cast-in-place and pre-cast concrete, concrete blocks;
- metals (steel, copper, bronze, brass, ...);
- plastics (PE, PPE, ABS, fibreglass, ...);
- wood
- glass
- ceramic and porcelain tiles
- porcelain stoneware
- natural stone
- mirror fixing

For more information, download the technical data sheet from the website [www.litokol.it](http://www.litokol.it)





# ➤ Benefits



Product with very low volatile organic compound (VOC) emission rate. Satisfies the requirements of class EC1PLUS according to the EMICODE protocol and class A+ (Émission dans l'air intérieur - French regulation)



Certified according to ISEGA for contact with foodstuffs



Ready to use



Flexible



Waterproof



Hygro-hardener  
Excellent adhesion without primer on all typical industrial and building materials



Versatile product. Can also be used over underfloor heating and in overlay on existing ceramic and porcelain tiles.



Suitable for interior and exterior floor and wall applications, even in severe operating conditions.



Weatherproof



Wet and immersion bonding



No hazard labelling  
Solvent-free



Silicone- and isocyanate-free



Over-paintable.  
It can be over-painted immediately after its application using any type of commercially sold paint (do a spot test first)



# ➤ Colour range

Class	LITCO SIL GROUT	StyleGrout	STARLIKE EVO	EpoxyÉlite EVO
	White 1	✓	✓	✓
	White 2	✓	✓	
	Silver 0		✓	
	Silver 1	✓	✓	✓
	Silver 2	✓	✓	
	Silver 3	✓	✓	✓
	Black 0		✓	
	Black 1	✓	✓	✓
	Black 2	✓	✓	✓
	Grey 0		✓	✓
	Grey 1	✓	✓	
	Grey 2	✓	✓	
	Grey 3	✓	✓	

Class	LITCO SIL GROUT	StyleGrout	STARLIKE EVO	EpoxyÉlite EVO
	Ivory 1	✓	✓	
	Ivory 2	✓	✓	
	Ivory 3	✓	✓	✓
	Ivory 4		✓	
	Beige 1	✓	✓	
	Beige 2	✓	✓	✓
	Beige 3	✓	✓	✓
	Beige 4	✓	✓	✓
	Brown 1	✓	✓	
	Brown 2	✓	✓	
	Brown 3	✓	✓	✓
	Brown 4		✓	✓
	Brown 5		✓	

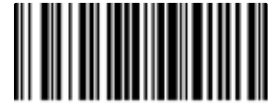
Glam COLLECTION	LITCO SIL GROUT	STARLIKE EVO
	Blue 1	✓
	Blue 2	✓
	Blue 3	✓
	Blue 4	✓
	Blue 5	✓
	Blue 6	✓
	Blue 7	✓
	Blue 8	✓
	Green 1	✓
	Green 2	✓
	Green 3	✓
	Green 4	✓
	Pink 1	✓
	Red 1	✓

	LITCO SIL GROUT	StyleGrout	STARLIKE EVO	EpoxyÉlite EVO
	White 1	✓	✓	✓
	Silver 1	✓	✓	✓
	Silver 3	✓	✓	✓
	Black 1	✓	✓	✓
	Ivory 3	✓	✓	✓
	Beige 3	✓	✓	✓
	Crystal		✓	



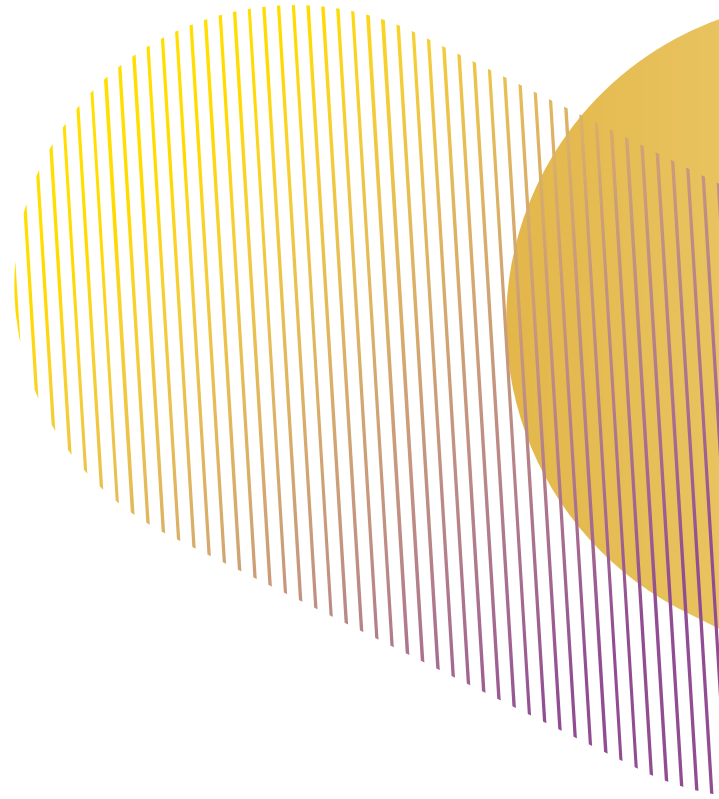
# ➤ Consumption

Linear metres of joint possible with a 300 ml cartridge					
	Width	Width	Width	Width	Width
Depth	6 mm	8 mm	10 mm	15 mm	20 mm
5 mm	± 10 m	± 8 m	± 6 m	-	-
7 mm	-	± 6 m	± 4.5 m	± 3 m	-
10 mm		-	± 3 m	± 2 m	± 1.5 m
15 mm		-	-	± 1.5 m	± 1 m
20 mm		-	-	± 1 m	± 0.8 m



VG.001

VOL580



# LITOKOL®

Litokol S.p.A.  
via Giovanni Falcone 13/1  
42048 Rubiera (RE)  
Tel +39 0522 622811  
Fax +39 0522 620150  
info@litokol.it  
[www.litokol.it](http://www.litokol.it)



Scan for more  
information